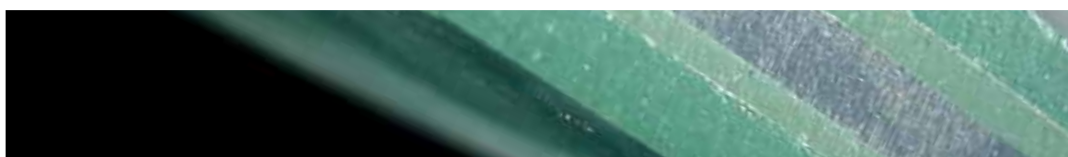


GLASS LAMINATE



Erapol Glass Laminate

This specialty system is the ideal choice for liquid laminating your glass. The adhesion between glass and polycarbonate is excellent and by using different combinations you can vary the application.

Properties:

- WATER CLEAR
- TWO COMPONENT
- CURES AT ROOM TEMPERATURE
- SOLVENT FREE
- FAST CURE
- QUICK TO APPLY
- LOW VISCOSITY



Applications:

- HOME AND LIVING AREAS
- OFFICE BUILDINGS
- SHOPPING MALLS
- CONSULAR AND EMBASSY BUILDINGS
- BALLISTICS
- CRIME PREVENTION



Features:

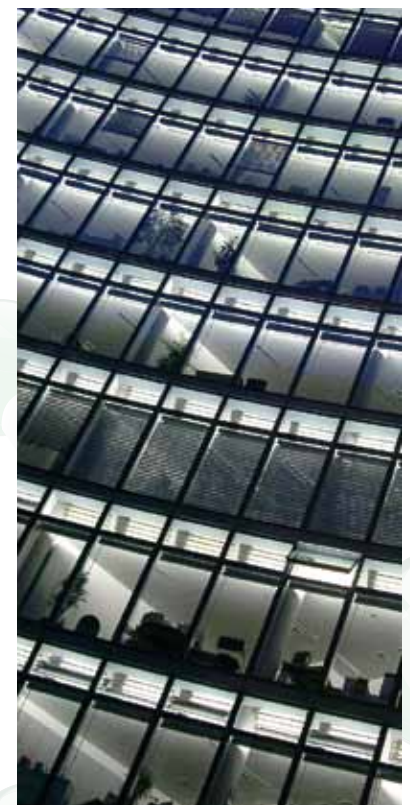
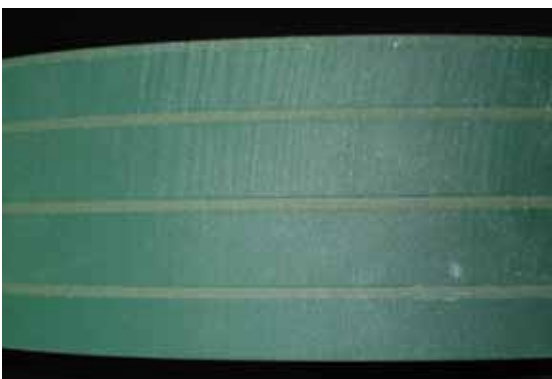
- LIGHT STABLE
- HIGH PERFORMANCE
- NON-AGING
- NON-DELAMINATING
- FLEXIBLE
- IMPACT RESISTANT
- BULLET RESISTANT
- BOMB BLAST RESISTANT





Product Specifications:

PROPERTIES	PART A	PART B
Specific Gravity @ 25°C	1.2 ± 0.05	1.2 ± 0.05
Viscosity @ 25°C (cps)	300 ± 100	300 ± 100
Appearance @ 25°C	Water Clear	Water Clear



For further information, please contact your local Era Polymers Sales Representative.

Head Office

Era Polymers Pty. Ltd.

25-27 Green Street
Banksmeadow
Sydney NSW 2019
Australia
P +61 2 9666 3788
F +61 2 9666 4805

Era Polymers Pty. Ltd. has a policy of continual improvement so please ensure you are in possession of the latest issue of the Product Information sheet for the products you are planning to use. Although every effort has been made to ensure the accuracy of the information contained herein, Era Polymers Pty. Ltd. gives no warranty that the information is accurate and shall under no circumstances be liable to any person if it is not. The customer must satisfy himself as to the suitability of any of Era Polymers Pty. Ltd. products for their requirements.



Era
Polymers

www.erapol.com.au

Sydney • Adelaide • Auckland • Brisbane • Melbourne • Singapore